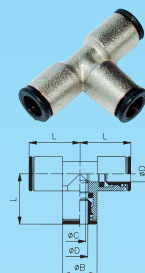


T-Verbinder

Messing vernickelt, technische Daten und Erklärungen auf Seite A2

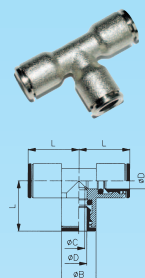
Bestell-Nr.	Schlauch Ø D	Ø C	Ø B	L	Euro
005-4	4	3,0	9,0	17,5	1,67
005-5	5	4,0	9,5	19,0	1,70
005-6	6	5,0	11,0	19,5	1,70
005-8	8	7,0	13,0	23,0	2,02
005-10	10	8,0	15,0	25,0	2,90
005-12	12	10,0	17,0	27,0	3,62
005-14	14	12,0	20,0	30,0	4,64



T-Verbinder - vernickelter Lösering

Messing vernickelt, technische Daten und Erklärungen auf Seite A2

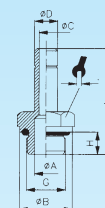
Bestell-Nr.	Schlauch Ø D	Ø C	Ø B	L	Euro
005-4Ni	4	3,0	9,0	17,5	1,76
005-5Ni	5	4,0	9,5	19,0	1,84
005-6Ni	6	5,0	11,0	19,5	1,84
005-8Ni	8	7,0	13,0	23,0	2,14
005-10Ni	10	8,0	15,0	25,0	3,09
005-12Ni	12	10,0	17,0	27,0	3,87
005-14Ni	14	12,0	20,0	30,0	4,95



Gewindeanschluss-Stecker

Messing vernickelt, technische Daten und Erklärungen auf Seite A2

Bestell-Nr.	Ø D	Gewinde G	Ø C	Ø B	H	L	Ø A	🔩	Euro
006-5-4	4	M5	2,0	8,0	4,0	24,5	2,0	8	0,31
006-5-5	5	M5	2,6	8,0	4,0	25,0	2,6	8	0,43
006-5-6	6	M5	2,6	8,0	4,0	26,0	2,6	8	0,43
006-18-4	4	G1/8	2,0	13,0	6,0	27,7	6,0	13	0,31
006-18-5	5	G1/8	3,0	13,0	6,0	28,0	5,5	13	0,43
006-18-6	6	G1/8	4,0	13,0	6,0	29,5	6,0	13	0,31
006-18-8	8	G1/8	6,0	13,0	6,0	31,0	6,0	13	0,31
006-18-10	10	G1/8	8,0	13,0	6,0	32,0	5,5	13	0,70
006-14-4	4	G1/4	2,0	16,0	8,0	30,2	7,5	13	0,41
006-14-5	5	G1/4	3,0	16,0	8,0	31,0	7,5	13	0,45
006-14-6	6	G1/4	4,0	16,0	8,0	32,0	7,5	13	0,34
006-14-8	8	G1/4	6,0	16,0	8,0	33,5	7,5	13	0,37
006-14-10	10	G1/4	8,0	17,0	8,0	38,0	8,0	13	0,41
006-14-12	12	G1/4	10,0	16,0	8,0	39,0	10,0	13	0,62
006-38-8	8	G3/8	6,0	20,0	9,0	35,5	9,0	13	0,44
006-38-10	10	G3/8	8,0	20,0	9,0	41,0	8,0	13	0,50
006-38-12	12	G3/8	10,0	20,0	9,0	42,0	11,0	13	0,63
006-38-14	14	G3/8	12,0	20,0	9,0	44,0	12,0	16	0,90
006-12-12	12	G1/2	10,0	24,0	11,0	44,0	13,0	16	0,90
006-12-14	14	G1/2	12,0	24,0	11,0	46,0	13,0	16	0,94



Doppelstecker

Messing vernickelt, technische Daten und Erklärungen auf Seite A2

Bestell-Nr.	Ø D	Ø C	L	Euro
007-4	4	2,0	32,0	0,36
007-5	5	3,0	33,0	0,67
007-6	6	4,0	35,0	0,39
007-8	8	6,0	38,0	0,43
007-10	10	8,0	45,5	0,57
007-12	12	10,0	48,0	0,63
007-14	14	12,0	52,0	0,94

